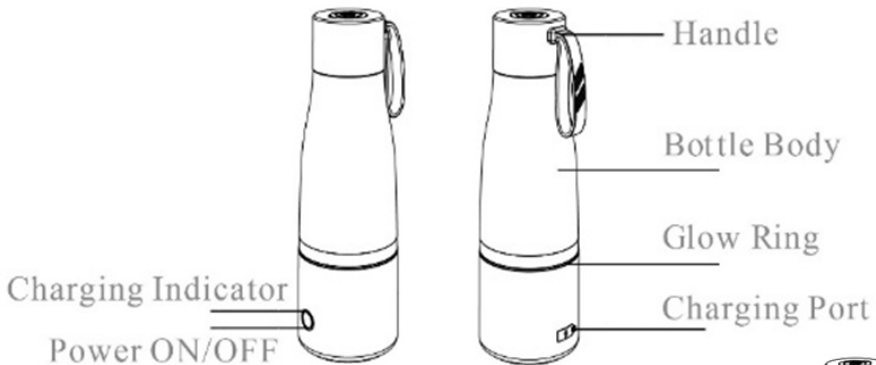


Portable Hydrogen Water Bottle
OPERATING INSTRUCTIONS
Version 1.0

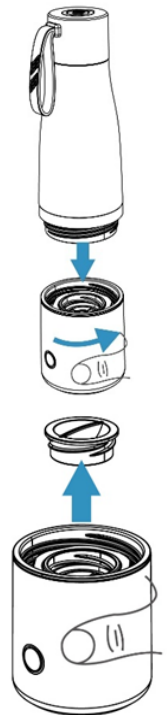
Parts List

- Bottle
- User Manual
- Bottle connect adaptor
- USB Type-C cord
- Power Adaptor



Using the bottle for the first time

- Remove the sealing cover from the electrolyser and pour out any liquid inside. Keep the cover in a safe place for future use—it helps keep the electrolytic cell moist when not in use.
- Fill the bottle with warm water and, with the lid open, run one 5-minute electrolysis cycle. Then, pour out the water. This primes the bottle and prepares it for use.
- Attach the lid and bottle body securely to the base and tighten.
- Unscrew the bottle lid and fill with filtered drinking water.

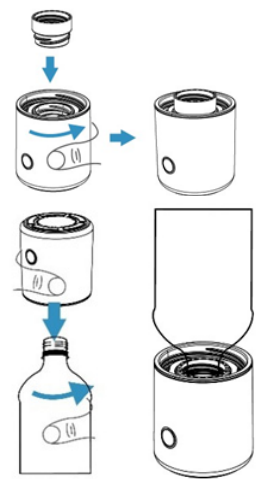


Operation instructions

| | |
|------------|--|
| Charging | The bottle is typically shipped fully charged. If it isn't, simply charge it until the green light appears. While charging, a red light will indicate that the battery is not yet full. |
| 5 minutes | Press the button briefly once - this will activate the blue light and produce a single beep. The unit will automatically turn off when the cycle is complete. |
| 10 minutes | Briefly press the button twice to activate the extended cycle- the blue light will turn on and beep twice. The unit will automatically shut off when the cycle finishes. This is the maximum run time, designed to prevent excessive internal pressure and potential damage. |

Bottle connect adaptor operation guide

1. Securely attach the bottle connector adaptor to the base of the unit.
2. Invert the bottle and screw the base onto the mouth of the water bottle, ensuring it is firmly tightened.
3. Rotate the bottle back to the upright position and proceed with the operation instructions provided.



Maintenance

- If white scale appears on the interior walls or bottom of the bottle after extended use, clean it by soaking with warm water mixed with white vinegar or citric acid, then rinse thoroughly with clean water.
- Dispose of any residual wastewater that collects at the bottom of the bottle base.
- If the bottle will not be used for an extended period, place a small amount of water over the electrolyser membrane and cover it with the sealing cap to keep it moist. A dry membrane can reduce hydrogen production.
- Drink the hydrogen water immediately after electrolysis to minimize the loss of hydrogen gas over time.

Precautions

- Only use water—do not add juice, tea, milk, or other beverages.
- Place the product on a flat, stable surface during use.
- Do not fill the bottle above the maximum fill line indicated on the bottle.
- Avoid running electrolysis for more than 10 minutes with the same water, as excessive pressure may damage the bottle.

Product parameters

| | |
|--|---|
| Model | CA-306 |
| High-Concentration H ₂ Water Device | PEM/SPE Portable hydrogen water bottle. |
| High-PSI bottle | Tritan plastic - engineered to handle elevated internal gas pressure safely and shatter resistant - Does not contain BPA, BPS, or other bisphenol compounds – reusable and recyclable |
| Anode reservoir off-gas port | Pin-hole located on the bottom of the bottle |
| Net Weight | 320g |
| Related voltage | 5V=1A |
| Battery type | Lithium polymer |
| Size | 64.4 x 213 mm |
| Volume | 200 mL |
| Charging time | About 3-4 Hours |
| Battery capacity | 8.14 Wh |
| Hydrogen Concentration | 5-minute mode: up to 2.5 mg/L 10-minute mode: 2.5-3.5 mg/L We recommend users utilize the 10-minute cycle time for consuming hydrogen water from the device |

Troubleshooting

| Issue | Solution |
|--|--|
| In the process of making hydrogen -rich water there are larger bubbles | Press the button briefly once - this will activate the blue light and produce a single beep. The unit will automatically turn off when the cycle is complete. |
| The power button does not respond. | Charge the bottle. |
| When the water is electrolysed there appear different sizes of bubbles | Small bubbles are generated when water is electrolyzed, the small bubbles gather at the bottom to form large bubbles and then float, this is normal. |
| Bottle Leaking | There will be some discharge of water coming from the bottom of the bottle, as there is a pin hole located at the bottom of the bottle for gas off discharge, however, if the bottle is leaking from anywhere else, check connections and/or contact us. |

If you run into any other problems or have any specific questions, contact your AlkaWay Customer Support Team on 1800 268 469 or email us at info@alkaway.com.au

Disclaimer

These products have not been medically evaluated and are not intended to diagnose, cure, treat or prevent disease. Seek medical advice if seriously ill or attempting to cure or prevent disease. This product is not a medical device and is not advertised for any therapeutic effects.